



Northern Ireland
Curriculum

Reading Scheme to Support the
Learning for Life and Work Thematic Units (SLD)
Reduce, Reuse and Recycle
Level 1

Writers' Group:

Graham Hawthorne, Marian Humphrey, Shirley Gwynne and Avril Napier, all from Roddensvale School, Larne

A CCEA Publication ©2010

www.nicurriculum.org.uk

Photographs

Unless otherwise stated all photographs are courtesy of Roddensvale School, Larne

Getty Images: page 4 (top 3 photographs)

Jupiter Images: page 3

Reading Scheme to Support the
Learning for Life and Work
Thematic Units (SLD)

Reduce, Reuse and Recycle

Level 1

Notes to the Teacher:

The activities in this booklet are designed to support the topic *Reduce, Reuse and Recycle*. You can photocopy, cut out and laminate the picture cards at the back of the booklet and use them together with the picture board in a variety of ways. For example:

- Talk together about what the pictures represent. Highlight that rubbish, old furniture and old clothes are types of waste and that burning rubbish, using landfill sites and dirty rivers are bad for our world.
- Hold a class discussion about the local environment, using the pictures as prompts. Where possible, make links to the learners' own experiences.
- Have the learners practise picture recognition by sticking the cards on top of the identical squares on the board.
- Have the learners place all the cards in front of them. Say a word, and they point to or hold up the corresponding picture card.
- Give a clue, such as 'you can put your old newspapers and cartons here', and invite the learners to hold up the corresponding card (recycling bin).
- Call out specific categories for the learners to sort and categorise their cards, for example 'different types of waste' or 'places where we can recycle things'.
- Use two sets of laminated cards to play matching pairs. Place all the cards face down. Working in pairs, the learners take turns to turn over two cards – if they match, they keep the cards. The winner is the one with more cards at the end.

The things that we don't use or want any more are **waste**. Waste is a big problem.

We can **reduce** our waste by throwing away less.

Sometimes we can take things to the charity shop – then other people can **reuse** them.

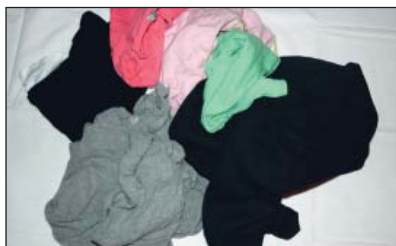


We can also **recycle** things like paper, plastic and glass by putting them in the recycling bin.

reduce • reuse • recycle

It's good to look for ways to reduce, reuse and recycle.

Would you take these things to the charity shop or put them in the recycling bin? Draw lines to the correct place.





Do you have any recycling bins at home?
What colour are they?
What can you put in them?

Picture Board



rubbish



old furniture



burning rubbish



landfill site



old clothes



dirty river



recycling centre



recycled clothes



recycling centre



clothing bank



charity shop



recycling bins

Picture Cards A



rubbish



old furniture



burning rubbish



landfill site



old clothes



dirty river



Picture Cards B



recycling centre



recycled clothes



recycling centre



clothing bank



charity shop



recycling bins



A CCEA Publication © 2010



INVESTOR IN PEOPLE



CUSTOMER SERVICE EXCELLENCE



NORTHERN IRELAND
QUALITY AWARD

COUNCIL FOR THE CURRICULUM EXAMINATIONS AND ASSESSMENT

☎ +44 (0)28 9026 1200

☎ +44 (0)28 9026 1234

☎ +44 (0)28 9024 2063

29 Clarendon Road, Clarendon Dock, Belfast BT1 3BG

✉ info@ccea.org.uk

🌐 www.ccea.org.uk



Rewarding Learning