



Northern Ireland  
Curriculum

Reading Scheme to Support the  
Learning for Life and Work Thematic Units (SLD)  
**Jobs in the Local Community**  
Level 1

**Writers' Group:**

Graham Hawthorne, Marian Humphrey, Shirley Gwynne and Avril Napier, all from Roddensvale School, Larne

A CCEA Publication ©2010

[www.nicurriculum.org.uk](http://www.nicurriculum.org.uk)

**Photographs**

All photographs courtesy of Roddensvale School, Larne

Reading Scheme to Support the  
Learning for Life and Work  
Thematic Units (SLD)

# **Jobs in the Local Community**

Level 1

---

## Notes to the Teacher:

The activities in this booklet are designed to support the topic *Jobs in the Local Community*. You can photocopy, cut out and laminate the picture cards at the back of the booklet and use them together with the picture board in a variety of ways. For example:

- Have the learners practise picture recognition by sticking the cards on top of the identical squares on the board.
- Have the learners place all the cards in front of them. Say a word, and they point to or hold up the corresponding picture card.
- Give a clue, such as ‘you can buy flowers here’, and invite the learners to hold up the corresponding card (garden centre).
- Call out specific categories for the learners to sort and categorise their cards, for example ‘places where you can buy food’ or ‘places you have visited’.
- Hold a class discussion on the topic, talking about the picture on each card.
- Use two sets of laminated cards to play matching pairs. Place all the cards face down. Working in pairs, the learners take turns to turn over two cards – if they match, they keep the cards. The winner is the one with more cards at the end.

---

Imagine if everyone had to cut their own hair, prepare their own food in cafés and fix their own cars. Would that be a good idea?

When people work in different places in a community and do different jobs, they can help each other with different things.

For example,  
hairdressers cut  
hair ...



... and waiters serve  
food.



**Circle the places  
where you would  
like to work.**



**nursery**



**café**



**office**



**charity shop**



**hairdresser's**



corner shop



garage

## What type of job might you do in each place?

washing dishes

watering plants

washing cars

hanging clothes

playing with children

brushing the floor

making photocopies

opening boxes of food



garden centre

# Picture Board



café



charity shop



office



garage



corner shop



nursery



garden centre



hairdresser's

# Picture Cards A



café



charity shop



office



garage



# Picture Cards B



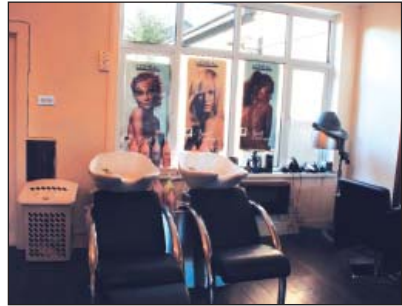
corner shop



nursery



garden centre



hairdresser's



A CCEA Publication © 2010



INVESTOR IN PEOPLE



CUSTOMER SERVICE EXCELLENCE



NORTHERN IRELAND  
QUALITY AWARD

**COUNCIL FOR THE CURRICULUM EXAMINATIONS AND ASSESSMENT**

☎ +44 (0)28 9026 1200

☎ +44 (0)28 9026 1234

☎ +44 (0)28 9024 2063

29 Clarendon Road, Clarendon Dock, Belfast BT1 3BG

✉ info@ccea.org.uk

🌐 www.ccea.org.uk



*Rewarding Learning*