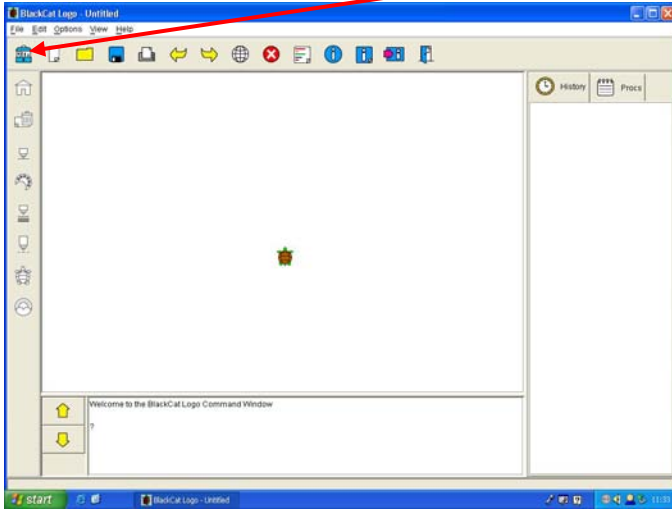
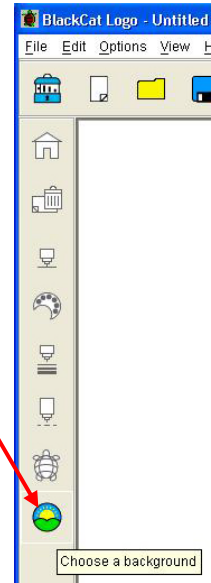


Importing Downloaded Picture in Logo

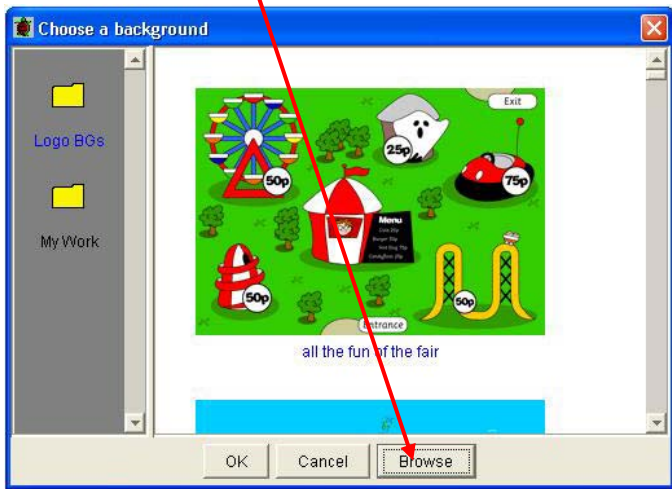
1. Ensure you are working on the blue level.



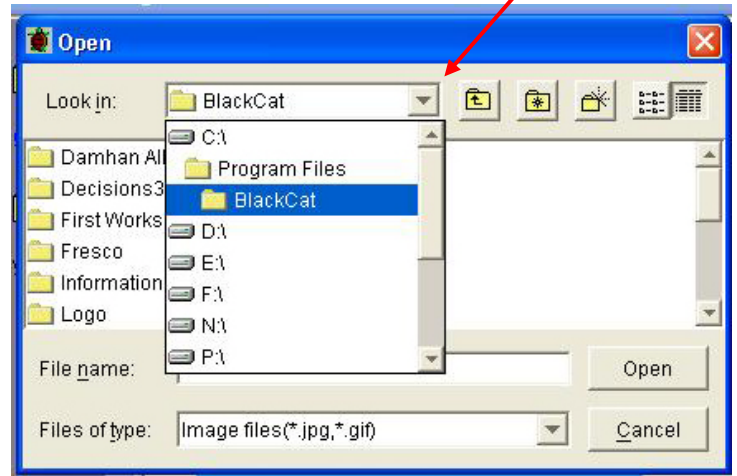
2. Left click on the left hand column icons for the one for backgrounds (It's circular at the bottom of the icons)



3. Click 'Browse' in the dialog box which appears



4. Click the arrow in the box at the top beside 'Look in'



5. Select the 'W' drive (this matches the RM Shared Documents folder)

The image will be in this folder.

Click it to select and it appears as a background.

